



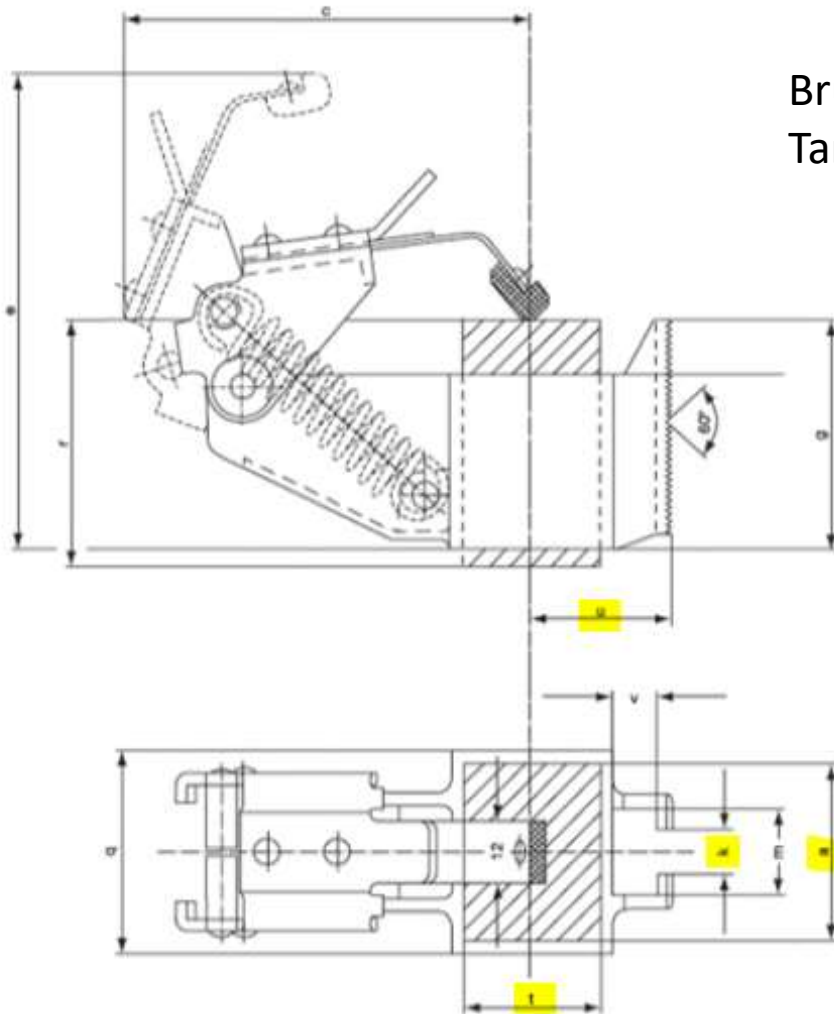
Carbon Technology

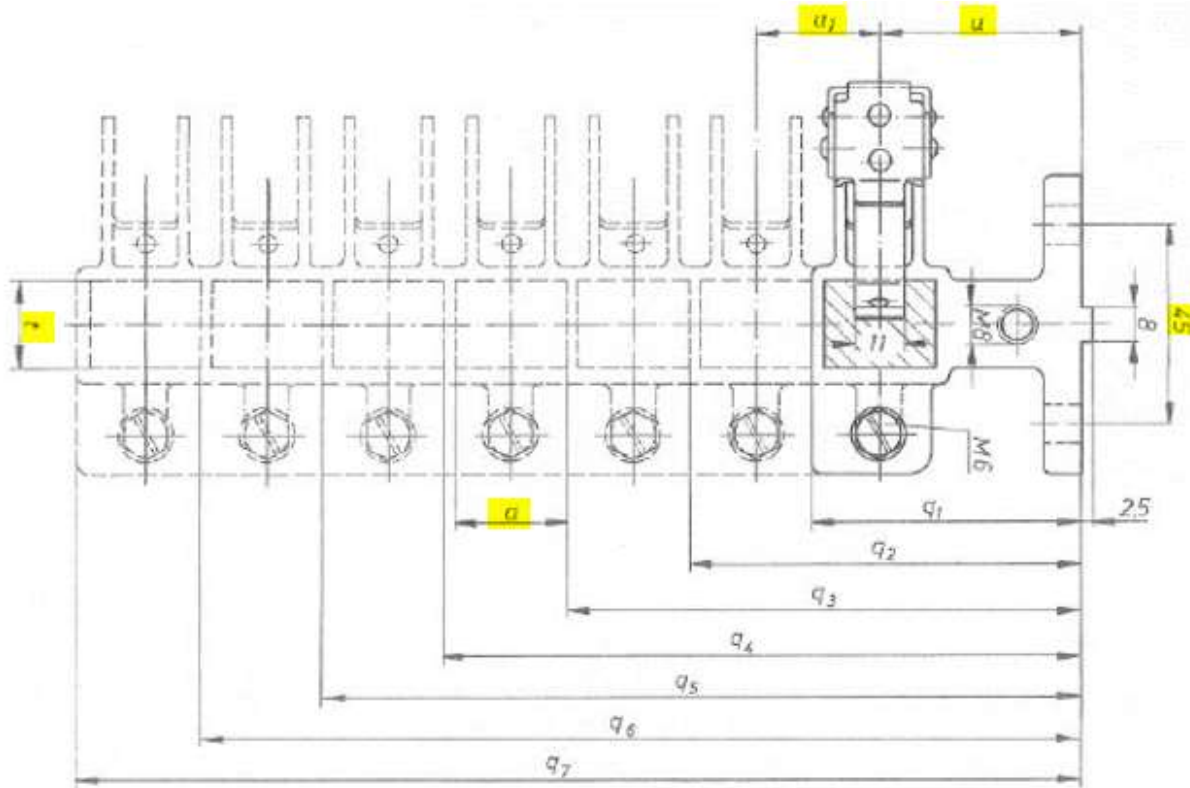
Workshop

Brush&holder identification

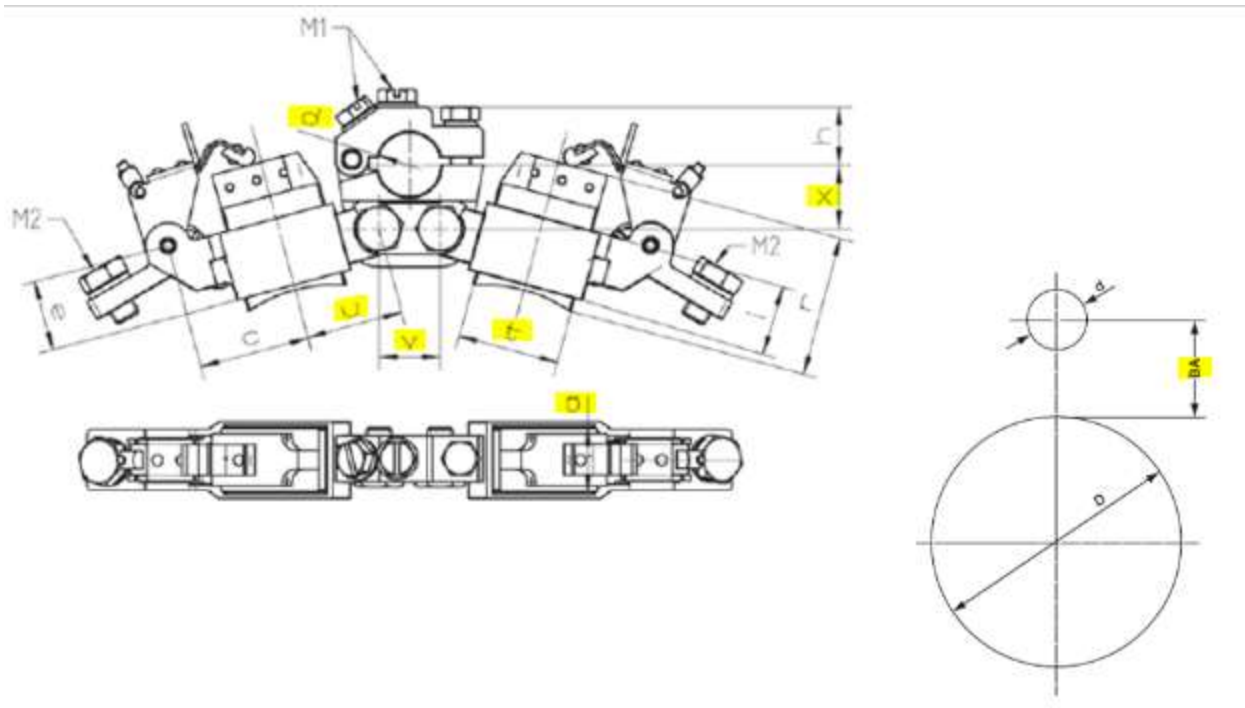
Brush holder (with tension and coil spring) and Tandem brush holder

- u-size; mounting surface to the middle of the brush guide
- k-size; diameter of the screw to assemble the holder at the clamp
- t/a-size; brush size





- u-size; mounting surface to the middle of the brush guide
- u1-size; from one brush guide to the next
- t/a-size; brush size
- Nr. of the brush guide
- distance of the mounting hole



- u-size; middle of the brush guide to the center of the fixing of the leg
- d-size; diameter of the clamp
- ba-size; middle of the diameter to the surface of the slipping (at least x-size)
- t/a-size; brush size